

Panopto LTI student submission assignment- preparing and student submission

This guidance demonstrates the steps to prepare a student submission assignment using the Panopto LTI.

Begin in the Assessments tab, then click on "Assessments" and then "Assignment"

The screenshot shows the Blackboard interface for creating an assignment. The left sidebar has a green circle with the number '1' next to the 'Assessments' menu item. The 'Assessments' dropdown menu is open, and a green circle with the number '2' highlights the 'Assignment' option. The main content area displays a list of assignments with the following details:

- Are we having fun yet?**
Are we having fun yet?
- Test assignment**
Availability: Item is available, but some students or groups may not have access.
Enabled: Adaptive Release
- How to have fun**
How do you have fun?
- test assignment**

Instructions for creating a Panopto submission are provided in a text box above the list:

1. To start creating your video, open your [Panopto video library](#).
2. Select the icon, which looks like a circle with a plus symbol inside of it, to open the Add Content window. Then select **Panopto Student** and select **Write Submission** to expand the entire toolbar.
3. A window will open to show the videos in your personal folder. If your video is located in a different folder, select the correct folder from the drop-down at the top.
4. Select the video you wish to submit and click **Submit Video**.
5. Your video will be added to the submission. Add any extra information and **Submit**.

Complete the required fields, indicating to students that this is a Panopto submission in the Description box.

When fields are completed, press "Submit". The link will look like a typical Blackboard assignment:

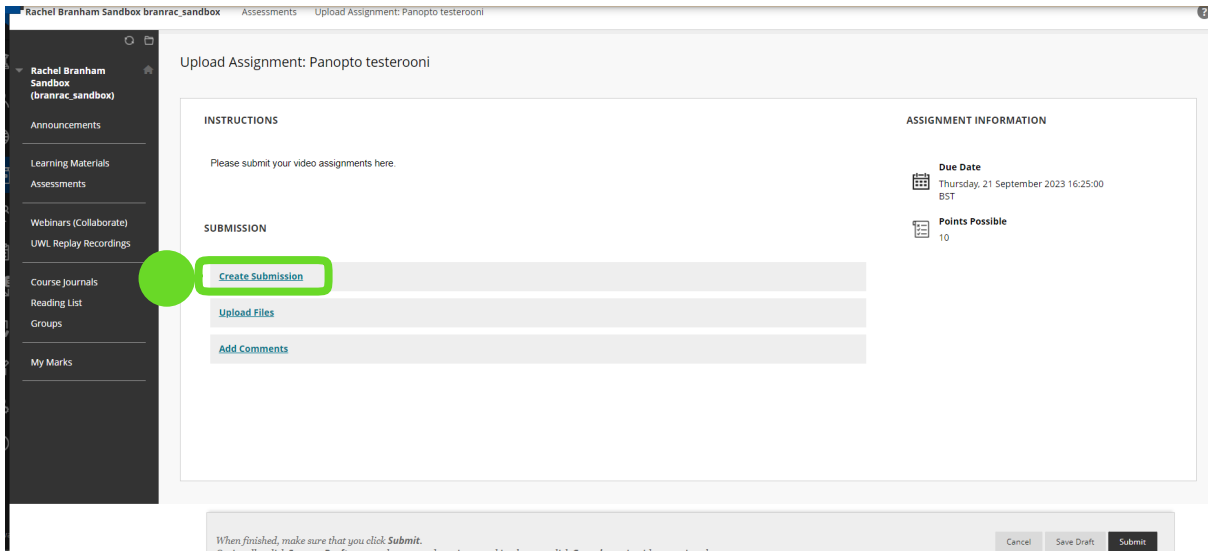


Panopto testerooni ▼

Please submit your video assignments here.

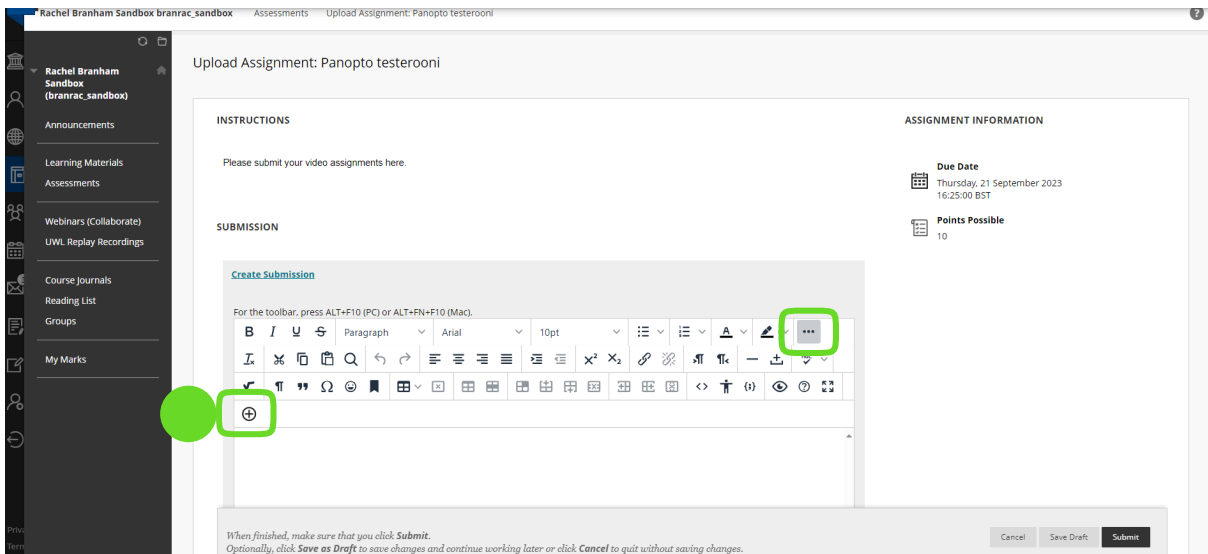
Student submission

When students are ready to submit their Panopto assignments, they click on the assessment link to be brought to the submission page. They click on "Create Submission":

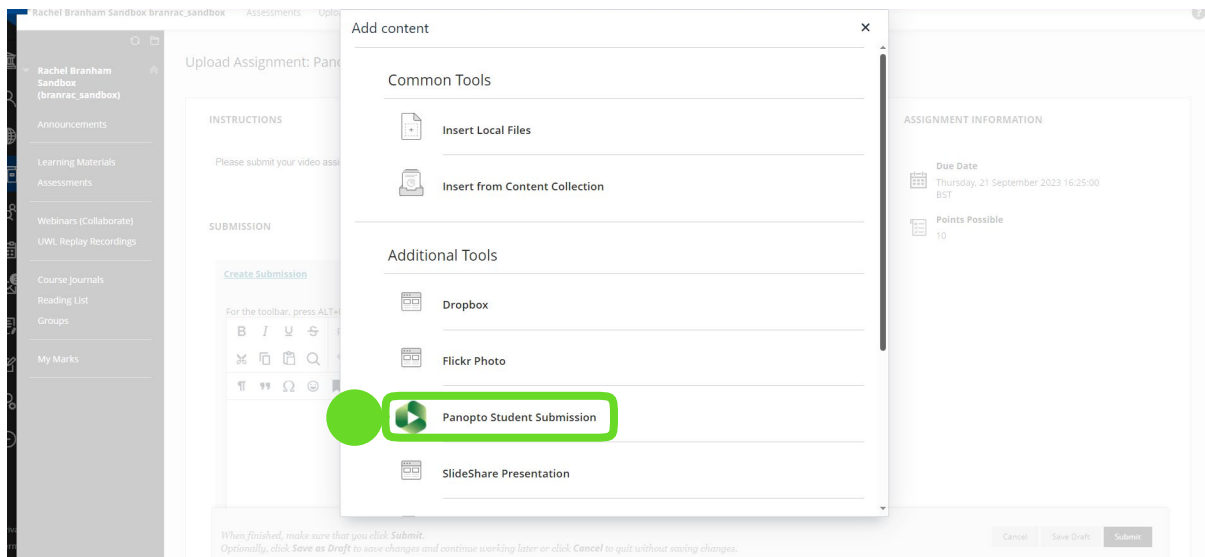


They click on "Create Submission".

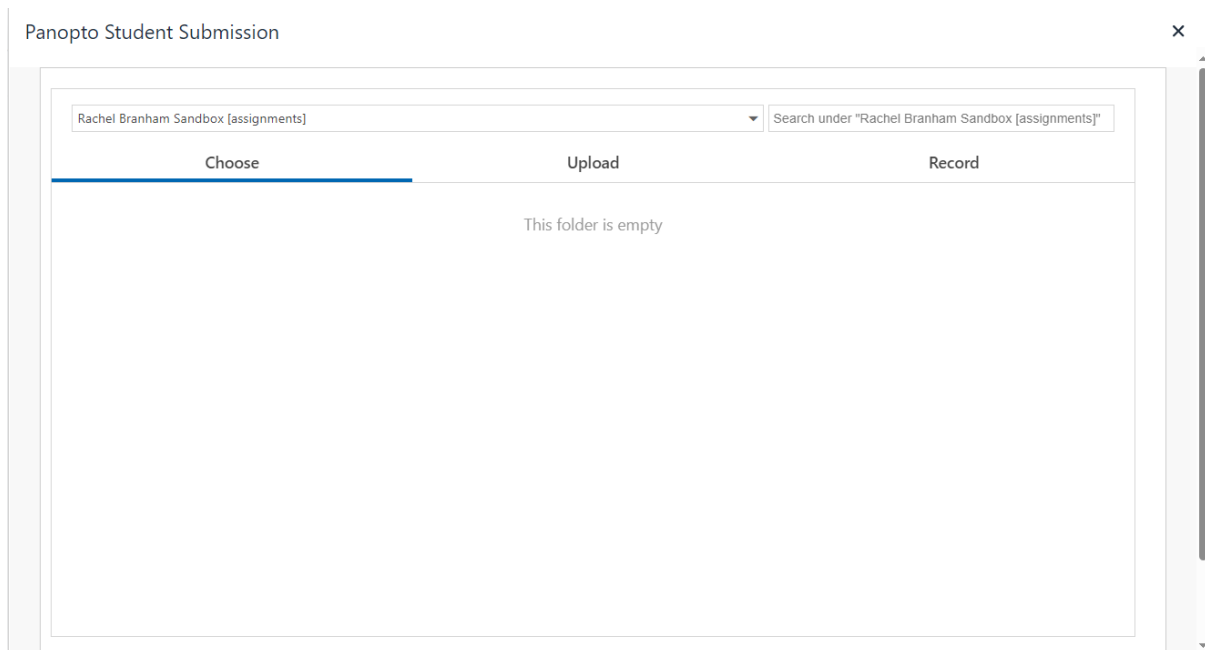
In the field that appears, there is a + symbol (if this is hidden, it accessed by clicking the three dots "...")

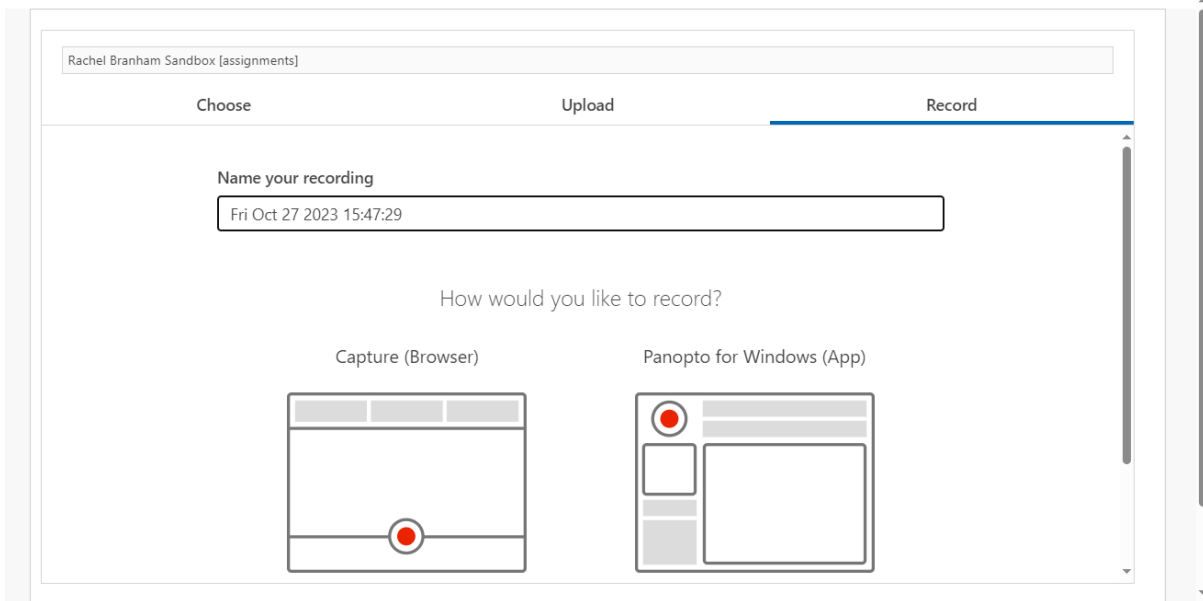
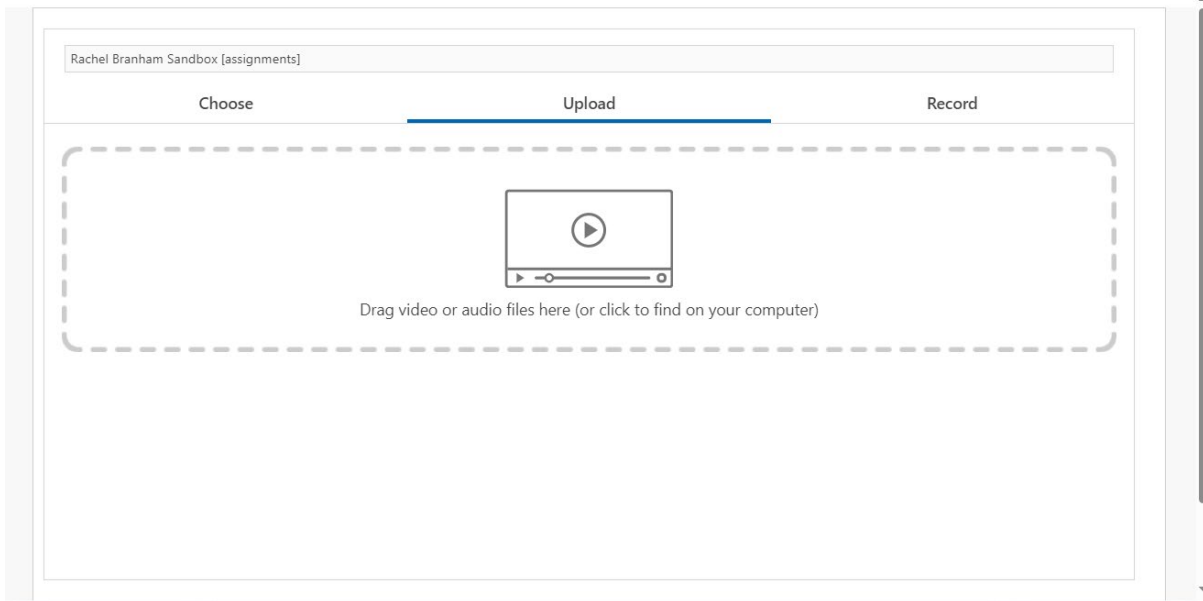


This opens a new field. Students scroll to "Additional Tools" and click on "Panopto Student Submission":



From here, students can either select a recording previously made in Panopto, upload a recording they have made elsewhere, or complete a recording using Panopto Capture right then.





Additional information on using [Panopto Capture](#) and other questions can be found on the [Panopto Support Site](#).

Once an option has been selected, they press "insert" and then will be brought back to the assignment submission page where the recording will be embedded:

Assessments

Webinars (Collaborate)

UWL Replay Recordings

Course Journals

Reading List

Groups

My Marks

SUBMISSION

Due Date
Thursday, 21 September 2023
16:25:00 BST

Points Possible
10

Create Submission

For the toolbar, press ALT+F10 (PC) or ALT+FN+F10 (Mac).

B I U Paragraph Arial 10pt

My experience of active learning at UWL_default

) Video will be ready shortly

When finished, make sure that you click **Submit**.
Optionally, click **Save as Draft** to save changes and continue working later or click **Cancel** to quit without saving changes.

Cancel Save Draft **Submit**

Students then press "submit" at the bottom right corner. The assignment will appear under Needs Marking in Blackboard.